

CLIP SUPPORTED SCREENS

MATERIAL OPTIONS



Glass
1/4" or 3/8" Clear



Lexan™
1/4" or 3/8" Lexan
Polycarbonate Clear

Note: We do not recommend blending Glass screens and Lexan screens as they will appear different.

MOUNTING OPTIONS



Surface Mount Clip Screen



Freestanding Clip Screen
Only in Lexan
(The foot is 12" total in length.)



Under Surface Mount Clip Screen

FINISH OPTION



Metallic Silver

Notes

1. Clip dimensions: 2 1/8" H, 2 1/3" W and 1 1/2" D.
2. Cords can be managed on Clip Screens without cut-out via the slight opening that is standard.
3. Under Surface Mount Clip fits worksurfaces with thicknesses between 1.0" – 1 3/16".
4. Find all AIS screen images on the online image library.

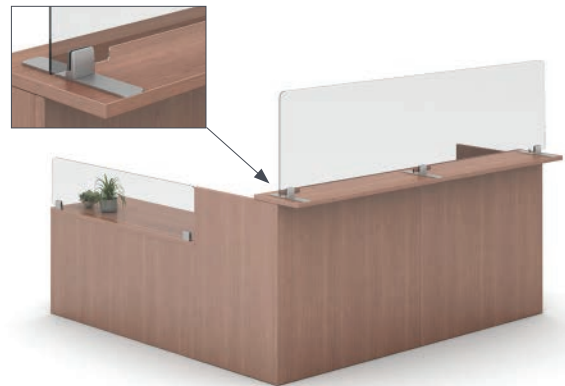
APPLICATION EXAMPLES



Freestanding Clip Screen. (Only in Lexan.)



Clip Screen, Surface Mount with Glass.



Freestanding Clip Screen with two, 2" high cut-outs (Only in Lexan).
Also shown, Clip Screen Surface Mount.

Contact the AIS Screen Team for questions: screens@ais-inc.com or 978.786.6816 Ext. 216

AIS Screens are designed to be easily installed in most industry standard applications. However, it is the full responsibility of the dealer to understand the installation methods required as well as any limitations that may impact the proper installation of AIS Screens.

CHANNEL SUPPORTED SCREENS

MATERIAL OPTIONS



Glass
1/4" or 3/8" Clear



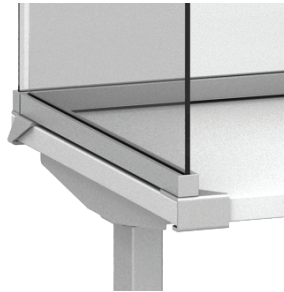
Lexan™
1/4" or 3/8" Lexan
Polycarbonate Clear

Note: We do not recommend blending Glass screens and Lexan screens as they will appear different.

MOUNTING OPTIONS



Surface Mount Channel Screen



Under Surface Mount
Channel Screen

Note: Under Surface Mount fits worksurfaces with thicknesses between 1.0" – 1 3/16".

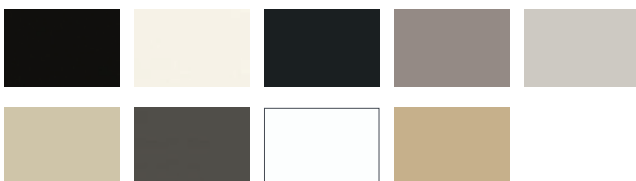


Surface Mount
Channel Screen on Panel
Shown on Divi Linear.*

*Offered on Linear and Radius trim. For more information, please contact AIS Screen Team (see contact info below).

Note: Channel dimensions: 1" H and 1" D.

FINISH OPTIONS



Choose from AIS Grade A Paint Finishes

APPLICATION EXAMPLES



Channel Screen Surface Mount on Panel.



Channel Screen with Under Surface Mount in Lexan on Height Adjustable Table.



Channel Screen with Surface Mount in Glass on 120° Height Adjustable Table.

Contact the AIS Screen Team for questions: screens@ais-inc.com or 978.786.6816 Ext. 216

AIS Screens are designed to be easily installed in most industry standard applications. However, it is the full responsibility of the dealer to understand the installation methods required as well as any limitations that may impact the proper installation of AIS Screens.

DIFFERENCE BETWEEN GLASS & LEXAN® POLYCARBONATE

GLASS



- AIS Glass is standard with straight corners.
- AIS Glass is standard tempered glass with standard iron content. Request samples from literature center.
- Glass can be cleaned with most common cleaning materials already found in janitorial supplies.
- 1/4" Glass weighs 2.88 lbs per square foot.
- 3/8" Glass weighs 4.32 lbs per square foot.

LEXAN® POLYCARBONATE



- AIS Polycarbonate/Lexan screens are standard with rounded corners and are clear.
- Polycarbonate has specific chemicals that should NOT be used when cleaning (please refer to the AIS Cleaning and Maintenance Guide online).
- 1/4" Lexan weighs 1.44 lbs per square foot.
- 3/8" Lexan weighs 2.88 lbs per square foot.
- Do not confuse Lexan polycarbonate with Plexi or Plexiglass. There are important differences.
 - Lexan polycarbonate is 200x stronger than plexiglass and is building-code friendly. (Note: local code compliance is the responsibility of the dealer and customer.)
 - Plexi or plexiglass is made of acrylic and does not meet NFPA fire testing requirements. **AIS does not use plexiglass on any of our screens.**
 - Plexi or plexiglass is very rigid and cracks easier than Lexan polycarbonate.

Contact the AIS Screen Team for questions: screens@ais-inc.com or 978.786.6816 Ext. 216

AIS Screens are designed to be easily installed in most industry standard applications. However, it is the full responsibility of the dealer to understand the installation methods required as well as any limitations that may impact the proper installation of AIS Screens.